

# PANEL-MOUNTED SOCKET OUTLETS STRAIGHT

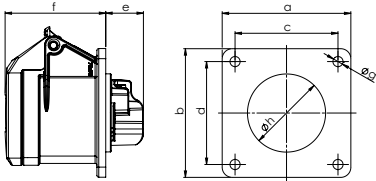
according to IEC 60309, EN 60309, VDE 0623



## PANEL-MOUNTED SOCKET OUTLET STRAIGHT

splash-proof IP54  
\*splash-proof IP44

- screw terminals
- brass contacts



POLES	3	4	5	3	4	5
AMPERE	16			32		

a and b	70	70	70	70	70	70
c and d	56	56	56	56	56	56
e	21	21	21	23	23	23
f	55	55	55	67	67	67
g	5,5	5,5	5,5	5,5	5,5	5,5
h	43	45	55	55	55	58
Weight [g/each]	115	127	141	162	178	206

VOLTAGE	230 V~	400 V~
FREQUENCY	50/60 Hz	50/60 Hz
DESIGNATION	3p = 6h 4p/5p = 9h	3p = 9h 4p/5p = 6h

AMPERE	POLES	ITEM NO.	ITEM NO.	PACKAGING UNIT
16	3	F31S201		10
16*	4	F41S201	F41S301	10
16	5	F51S201	F51S301	10
32*	3	F32S201		10
32*	4	F42S201	F42S301	10
32	5	F52S201	F52S301	10

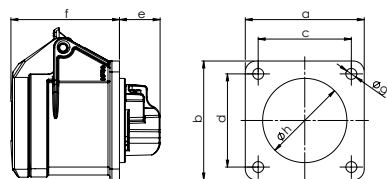
plug  power



## PANEL-MOUNTED SOCKET OUTLET STRAIGHT

splash-proof IP54

- screw terminals
- brass contacts



POLES	3	3 <sup>a</sup>
AMPERE	16	

a and b	60	55
c and d	47	44
e	21	28
f	55	46
g	5,5	4,5
h	43	43
Weight [g/each]	105	120

VOLTAGE	110 V~	230 V~
FREQUENCY	50/60 Hz	50/60 Hz
DESIGNATION	4h	3p = 6h 4p/5p = 9h

AMPERE	POLES	ITEM NO.	ITEM NO.	PACKAGING UNIT
16	3	F31S102	F31S202	10
16 <sup>a</sup>	3		F31S203	10

a with flange 55 x 55 mm